



Seattle Fire Foundation **Funding Priorities**

Seattle Fire Foundation

The Seattle Fire Foundation supports the Seattle Fire Department in protecting our community by providing essential tools, equipment and training resources to help keep firefighters safe and better protect us all.

Our Why Every city is challenged by a lack of resources to meet its critical needs, and Seattle is no exception. **Approximately 97% of the Seattle Fire Department's budget is committed to personnel and operational expenses. That leaves just 3% of the budget to invest in desperately needed technology, essential equipment and training resources.**

Our Goal

The Seattle Fire Foundation is working to create partnerships with the community to help meet the critical, unmet needs of the Seattle Fire Department.

Our Funding Priorities

- ✦ Enhance firefighter safety and effectiveness
- ✦ Invest in firefighter health and wellness
- ✦ Deepen the Department's connection with the communities it serves



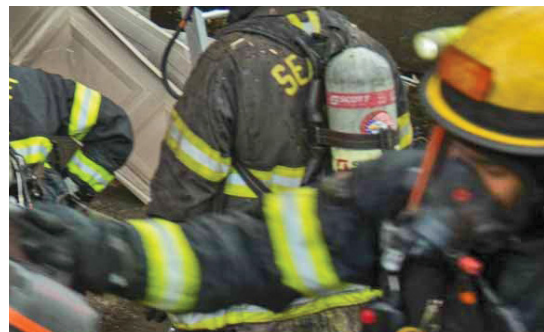
The Seattle Fire Foundation is a registered 501(c)3 nonprofit organization; federal tax #83-2715866. Your donations to the Foundation may be tax deductible.
Contact us at: info@supportSFD.org • facebook.com/supportSFD



Enhance Firefighter Safety & Effectiveness

Flash Hoods to Reduce Exposure to Cancer-Causing Carcinogens

Firefighters have a greater risk of contracting cancer due to their on-duty exposures to carcinogens. While all firefighters utilize various layers of personal protection while working in and around fires, the traditional flash hoods only protect their skin from high heat. Newer technology has led to the development of flash hoods that also provide a barrier to smoke and chemicals, reducing the wearer's exposure to cancer-causing carcinogens. **One-time goal: \$40,000 to help purchase two for each firefighter**



Thermal Imaging Cameras

A vital piece of equipment firefighters use is a thermal imaging camera (TIC). These devices "see" through heavy smoke, assisting firefighters in the search for trapped victims or to ensure their own safe entry and exit routes. The TIC is also an important tool for checking for hidden fire within walls or attic spaces, determining an accurate temperature of the environment prior to making entry and scanning for a liquid spill of a possibly hazardous material. Seattle Fire needs to replace failing and outdated TICs.

One-time goal: \$275,000



Water Rescue Jet Skis

Seattle is a city surrounded by over 200 miles of shoreline, and the Seattle Fire Department is often called to assist individuals in distress on the water. One of the challenges facing rescuers is quickly reaching the location of the person(s) in danger. Pre-deploying specially outfitted jet skis at key points along the shoreline will improve the ability of Seattle Fire's dive rescue team and surface swimmers to locate individuals and make a successful rescue. **\$300,000 for four jet skis, jet docks, maintenance and specialized training**



Search & Rescue Dog Teams

To ensure readiness in case of disaster, urban search and rescue (USAR) teams require trained search dog teams. As a member of the Washington State Task Force, Seattle Fire USAR dog teams have been deployed to events such as Hurricane Katrina and New York City after 9/11. The progression from puppy to certified search and rescue dog involves extensive training and time commitments from the firefighter/handlers. Most of the expenses related to training, certification and other costs are covered by the firefighter/handler. Your donations will help them with these unreimbursed expenses. **Annual goal: \$5,000**

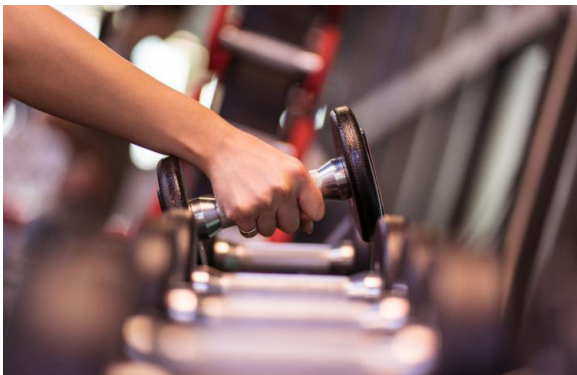




Firefighter Health & Wellness Initiatives



Suicide Prevention Efforts Firefighters are more likely to die by suicide than from responding to an on-duty incident. While recognition is growing of firefighter mental health needs, talking about suicide remains highly sensitive. Seattle Fire's Peer Support program wants to increase its prevention efforts by sending members to the Applied Suicide Intervention Skills Training (ASIST). These firefighters would then deliver that training to additional Seattle firefighters. **Initial goal: \$15,000 plus \$5,000 annually thereafter**



Fitness Equipment for Fire Stations The demands on members of the Seattle Fire Department continues to increase. Both the physical nature of the job as well as the stress level are significant challenges for the firefighters to manage. The ability to exercise for physical and mental health during the shift may never be more important. **Annual goal: \$50,000 to replace/update equipment**

CITY OF SEATTLE FIRE DEPT. THERAPY DOG PROGRAM

Zoe *Bob* *Hera*

HANDLER: LT MIKE DULAS HANDLER: FF PAUL PATTERSON HANDLER: FF KELSEY NUNLEY

Peer Support Therapy Dogs In October 2021, Seattle Fire launched a pilot program to bring the therapeutic benefits that therapy dogs provide to supporting the emotional needs of department personnel. More commonly seen in the veteran community to lower effects of PTSD, the fire service is now understanding the positive impact therapy dogs can have on firefighter stress levels and increased morale. Currently, the three SFD firefighter/dog handlers cover 100% of the costs of training, vet care, food and grooming. Donations will provide stipends to each dog handler to offset their ongoing expenses. **Annual goal: \$10,000**



Community Partnerships

Fire Science Degree scholarships, North Seattle College [North Seattle College's new Fire Science program](#) is the only one of its kind in King County. The two-year program was developed in close collaboration with the Seattle Fire Department and is aimed at attracting Seattle-area residents who want to pursue a firefighting career. It will also enable current firefighters to develop a variety of profession-specific skills. The Seattle Fire Foundation currently offers two annual scholarships to deserving students and would like to add two more annual scholarships.

Annual goal: \$10,000

Camp Eyabsut/Burn Camp Seattle firefighters have long volunteered at Camp Eyabsut, where burn survivors between 5-17 years of age gather in a safe setting. The campers experience a week of activities focused on camaraderie, community and normalcy. Donations will help the Seattle Fire Foundation fund a range of memorable and fun activities for campers, including a carnival and a culminating dinner on the last night of camp.

Annual goal: \$5,000

Adopt-A-Fire-Station Seattle firefighters work 24-hour shifts, and their on-duty home is one of 33 stations or the Medic One headquarters at Harborview. While the city provides the basics, many items – such as fitness equipment and the furniture in the shared TV room – are purchased or replaced out of firefighters' pockets. Due to heavy use, items such as washers, dryers, refrigerators and ice machines often break down. Replacements are not included in the city budget and repairs can take months or years to complete. **Donations can be allocated to a specific station. To offer an in-kind donation, email the foundation at info@supportSFD.org.**

Preserving Seattle Fire's history [The Last Resort Fire Department](#) is an all-volunteer, donation-funded group that's dedicated to preserving the 133 years of Seattle Fire Department history. Open on Thursdays, they operate out of a small museum space at Seattle Fire's headquarters and maintain an even greater inventory of apparatus in a Ballard warehouse. The Foundation aims to help cover the museum's annual operating costs at both places. **Annual goal: \$50,000**



The Seattle Fire Foundation is a registered 501(c)3 nonprofit organization; federal tax #83-2715866. Your donations to the Foundation may be tax deductible.

Contact us at: info@supportSFD.org • facebook.com/supportSFD



Health One Program, A Division of Mobile Integrated Health

Health One was formed by the Seattle Fire Department in 2019 with the goal to provide specialized outreach, transport and provider referrals to some of the most vulnerable members of our community. These individuals have often been frequent utilizers of the 9-1-1 system, and Health One provides a much better solution to address their specific needs.

Health One partners with a wide network of providers throughout the city that can offer solutions to help address critical needs. These include referrals for healthcare providers, behavioral health services and homeless resources.

Health One is staffed by two specialists from the SFD, and a case manager. This staffing model allows the team to address a wide range of issues and connect the client to specific resources that meet their needs.



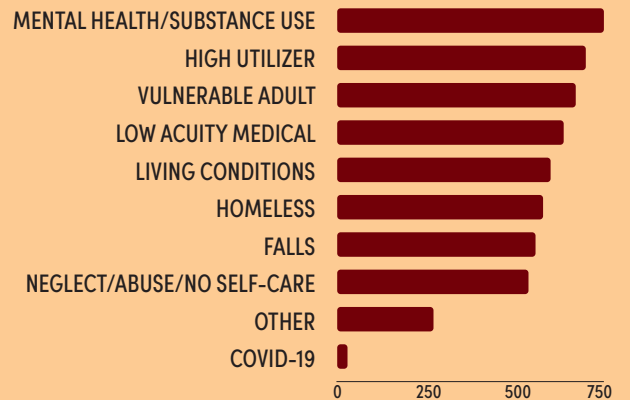
The **Seattle Fire Foundation** hopes to provide additional support to help Health One with critical needs, including:

- + **An additional vehicle for Health One civilian teams to utilize.** This would be a medium-size SUV that is outfitted with a radio and the necessary supplies. It would be used by three additional case managers and a Nurse Practitioner.
- + **Survival Kits** for teams to have on hand to distribute to community members in need. These kits will include warm clothing, sleeping bags or blankets, and toiletries and hygiene kits.
- + **Hotel Voucher Program**, for teams to provide community members that would benefit from a short-term respite off of the streets. Approximately half of Health One's clientele is homeless, and these vouchers will provide a safe, warm place to help them recover from injuries or schedule social service appointments.

Annual goal: \$100,000

REASONS FOR REFERRALS*

January 2021 - April 2022



*Multiple reasons may be selected for the same client



Want More Information? <http://www.seattle.gov/fire/safety-and-community/mobile-integrated-health>